



**Middle Park State School**  
27 Macfarlane Street  
MIDDLE PARK QLD 4074

**Telephone: 07 3712 9888**  
**Email: admin@middleparkss.eq.edu.au**  
**Office hours: 8.00am - 3.45pm**

## MID-TERM 2 NEWSLETTER – 17/05/2024

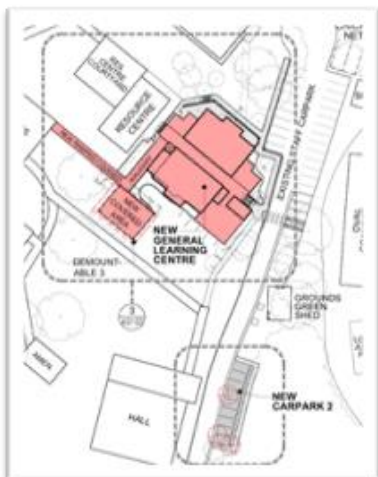
Dear MPSS Families

Around this time last year, we were very excited to hear that approval had been granted in the State Budget for the building of a specialist classroom space at Middle Park State School. This funding will deliver a new two-storey learning facility with Music Specialist spaces, four General Learning Spaces and two Flexible Learning Areas, to cater for future enrolment growth.

We have been busy since then, meeting regularly with project managers, infrastructure personnel and architects to finalise design plans. One year on, and a Public Consultation stage has now commenced for the duration of 1 May through to 29 May. You may have noticed signage along our fence lines with further information about the Infrastructure Designation proposal.

With funding approved to proceed to construction and once a contractor has been appointed, you will notice quite a bit of work happening in the area adjacent to the IMPACT (Resource) Centre throughout Semester Two. You will notice some reconstruction to carpark areas, removal of some trees, supported by arborist reports, and removal of one of our modulars which is currently housing 4K and 4C. Plans are therefore in place for 4K and 4C to relocate to the library for the second half of the year. These movements will occur at the end of this term, in preparation for the modular removal.

Below is a representation of the location of the new specialist building, where you will see its proximity to the IMPACT (Resource) Centre, Hall, Oval and the new carpark space. Also shown below, from the architectural drawings, is the view from the North West Elevation, looking towards the new building from the Resource Centre.



We will continue to keep you updated, as this project progresses. For anyone interested in viewing additional design plans, these will be displayed in our office foyer.

### Dress Code

At Middle Park State School, all students are required to wear the school uniform as set out in the Dress Code. Wearing a school uniform has many advantages in that:

- **School uniforms have a positive effect on students.** School uniforms promote a single standard of dress. Therefore, school environments become less competitive and more focused on learning. High expectations mean high achievement.
- **School uniforms boost school spirit.** Helping to build a sense of community within the school, uniforms create an atmosphere of belonging. This essence of unity can positively affect a child's attitude toward school and can lead to better learning and improved attendance.
- **School uniforms promote a safe, healthy learning environment.** Uniforms make it easier for school officials to identify non-students while promoting a safe and comfortable atmosphere.
- **School uniforms make mornings easier.** Through simplicity, uniforms promote time efficiency, organisation and neatness. Getting the morning off right is the key to a productive and happy day.
- **School uniforms are cost-effective.** Although expensive in initial outlay, uniforms can last throughout a school year or longer.
- **School uniforms encourage individual self-expression.** With uniforms, students find ways to express themselves creatively, rather than through their clothes - through the arts, music, sports, personality and academic achievement.

Now that the weather is beginning to cool down, a timely reminder of the Student Dress Code requirements and, in particular, our winter uniform expectations, is detailed below. We greatly appreciate your support in ensuring your children meet these requirements on a daily basis. Click [here](#) for a copy of our full Student Dress Code.



**Middle Park State School**  
27 Macfarlane Street  
MIDDLE PARK QLD 4074

**Telephone: 07 3712 9888**  
**Email: admin@middleparkss.eq.edu.au**  
**Office hours: 8.00am - 3.45pm**

**Years 1 – 6 Uniform – for Everyday Wear**

- Royal blue culottes or royal blue rugby knit shorts
- Two-toned blue polo shirt with school logo
- Dress in school material and design – optional for Years 1 to 6
- Shirt in school material and design – optional for Years 1 to 6
- White socks
- Black shoes or black joggers
- Royal blue zipped front jacket with school logo or \*two toned blue rugby knit long sleeve polo shirt
- Royal blue track pants
- Royal blue wide brimmed hat, legionnaires hat or bucket hat with school logo
- Royal blue or navy leggings or tights/\*royal blue stretch bootleg pants



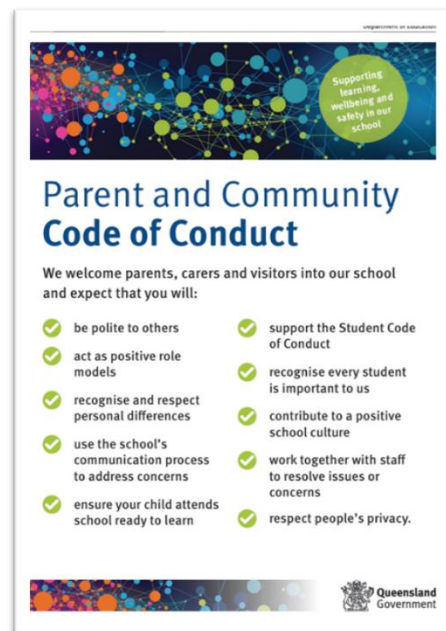
**Prep Uniform – for Everyday Wear**

- Two toned blue polo shirt with school logo
- Royal blue culottes or \*royal blue rugby knit shorts
- White socks
- Black school shoes or black joggers
- Royal blue zipped front jacket with school logo or \*two toned blue rugby knit long sleeve polo shirt
- Royal blue track pants
- Yellow legionnaires hat

**Parent and Community Code of Conduct**

At MPSSS, we are committed to supporting learning, wellbeing and safety. We welcome parents and other members of our diverse community into our school and highly value the opportunity to work together to support the learning and wellbeing of every student. As such, school staff are entitled to a safe working environment. Parents and other visitors to our school can support this feeling of safety by ensuring their communications and conduct at the school is respectful.

The table below describes ways in which parents, carers and visitors should conduct themselves while on school grounds, at school activities, and when interacting with others in the school community. This table can also be viewed on the [Queensland Government Education website](http://www.qld.gov.au/education).



Elements of engagement	It is expected that parents and visitors to our school communities will:	Parents and visitors to our school communities demonstrate this by:
<b>Communication</b> 	<ul style="list-style-type: none"> <li>• be polite to others</li> <li>• act as positive role models</li> <li>• recognise and respect personal differences</li> <li>• use the school's communication process to address concerns</li> </ul>	<ul style="list-style-type: none"> <li>• using polite spoken and written language</li> <li>• speaking and behaving respectfully at all times</li> <li>• being compassionate when interacting with others</li> <li>• informing staff if the behaviour of others is negatively impacting them or their family</li> <li>• respecting staff time by accepting they will respond to appropriate communication when they are able</li> <li>• requesting a meeting to discuss any concerns about their child's education – allowing staff time to prepare and appreciating their time may be limited</li> </ul>
<b>Collaboration</b> 	<ul style="list-style-type: none"> <li>• (parents) ensure their child attends school ready to learn</li> <li>• support the Student Code of Conduct</li> </ul>	<ul style="list-style-type: none"> <li>• taking responsibility for their child arriving and departing school safely on time every day</li> <li>• reading and encouraging their child to understand and follow the Student Code of Conduct</li> </ul>
<b>School Culture</b> 	<ul style="list-style-type: none"> <li>• recognise every student is important to us</li> <li>• contribute to a positive school culture</li> <li>• work together with staff to resolve issues or concerns</li> <li>• respect people's privacy.</li> </ul>	<ul style="list-style-type: none"> <li>• valuing each child's education</li> <li>• acknowledging staff are responsible for supporting the whole school community</li> <li>• speaking positively about the school and its staff</li> <li>• not making negative comments or gossiping about other school community members, including students – in person, in writing or on social media</li> <li>• understanding, at times, compromises may be necessary</li> <li>• considering the privacy of all school community members at all times, and understanding that the school cannot share confidential information.</li> </ul>



**Middle Park State School**  
27 Macfarlane Street  
MIDDLE PARK QLD 4074

**Telephone: 07 3712 9888**  
**Email: admin@middleparkss.eq.edu.au**  
**Office hours: 8.00am - 3.45pm**

### Complaints management

From time-to-time, parents/carers may have concerns about school matters or their child's progress. Minor concerns may become bigger issues if you do not talk to the school staff about them promptly. We have found that most issues can be resolved through prompt and courteous communication.

Middle Park State School is committed to ensuring all parents have their concerns dealt with in a fair and equitable manner. We have a complaints management procedure that will allow parents/carers and school staff to work through issues towards a satisfactory outcome. A summary of the procedure is:

1. In the first instance, parents/carers will contact the classroom teacher to discuss their concerns.
2. If concerns continue, parents/carers can then speak with the Deputy Principal (DeputyPrincipal@middleparkss.eq.edu.au) or Principal (Principal@middleparkss.eq.edu.au) via email, or contact Administration to make an appointment.
3. Following negotiations with Middle Park State School personnel, if you still feel that a resolution has not been reached, you may wish to contact District Office on 07 3028 8052.
4. If you have not been able to resolve your complaint through these formal processes, you can lodge your complaint with the Queensland Ombudsman.

### HPE News - Upper School - Mrs O'Brien

#### District Cross Country

On Tuesday, 23 April, the following students represented MPSS at the Northern Eagles District Cross Country at Limestone Park, Ipswich. All students were a credit to our school on an extremely challenging course. Well done to all our runners!! A special mention must go to Philip, who finished in 9<sup>th</sup> place. Each race had up to 85 competitors, so a place in the top 10 is a great achievement!

12yrs			
Sofia G.	5/6C	Zander H.	6B
Ella H.	6B	Ronan H.	6B
Savannah T.	6S	Charlie P.	6S
		Dominic R.	5/6C
11yrs			
Rebecca R.	5/6C	Philip H.	6S
Shevonne K.	6AG	Baxter P.	6B
		Cayden P.	6S
		Elliott C.	6B
10yrs			
Edith P.	3/4M	Brodie T.	5C
Ildi G.	4C	Henry H.	4R
Laura R.	4K	Lennix F.	5/6C
Isobel W.	5C		

### Representative School Sport

Congratulations to Troy P. who has been selected to represent Met West Region for Touch Football. In early June, Troy will travel to Rockhampton with the Met West team to compete at the Queensland State 10-12yrs Touch Football Championships. What a fantastic achievement and I wish Troy the best of luck!



### Yrs 3-6 Athletics Date Claimers

#### Monday, 3 June (Week 8)

- Who - 10, 11 and 12 year old students who have nominated
- What - 200m and 800m races
- When - 200m from 11:45am and 800m from 2pm

#### Tuesday, 4 June (Week 8)

- Who - All students in Years 3, 4, 5 and 6
- What - High jump, long jump, shot put and 100m
- When - Please see timetable below

In school sport, students are considered the age they are turning that year. For example, 10 year old students are those born in 2014, regardless of whether they have actually turned 10 yet.

Time	High Jump	Long Jump	Shot Put	100m Heats
9:10 - 10:10	11 Years	12 / 8 Years	9 Years	10 Years
10:15 - 11:15	10 Years	11 Years	12 / 8 Years	9 Years
Morning Tea	30 Minute Break (on oval)			
11:45 - 12:45	9 Years	10 Years	11 Years	12 / 8 Years
12:50 - 1:50	12 / 8 Years	9 Years	10 Years	11 Years
Lunch	30 Minute Break (on oval)			
2:20 - 2:45	100m Finals			

### Years 3 to 6 athletics training before school

In addition to our practice during HPE lessons, I am offering athletics training before school for interested students in Years 3, 4, 5 and 6 (no younger siblings please).

When: Tuesday and Thursday  
Beginning **Tuesday, 14 May**  
Ending Thursday 30 May  
7:45am - 8:30am

Where: Top oval  
**\*\* Training will not go ahead in wet weather \*\***



**Middle Park State School**  
27 Macfarlane Street  
MIDDLE PARK QLD 4074

**Telephone: 07 3712 9888**  
**Email: admin@middleparkss.eq.edu.au**  
**Office hours: 8.00am - 3.45pm**

Only students with a signed permission note will be able to participate in training.

Week	Tuesday	Thursday
5	14 May - Shot Put	16 May - Shot Put
6	21 May - High Jump	23 May - High Jump
7	28 May - Long Jump	30 May - Long Jump

#### HPE News - Lower School - Mr Sanchez

Get ready to cheer and support our young athletes at the upcoming Junior Sports Carnival for Years Prep, 1 and 2! We're thrilled to invite you to join us on Wednesday, 12 June for a morning filled with fun, excitement and friendly competition.

Prepare yourselves as our youngest athletes partake in a variety of engaging activities and competitions, including sprints, relay races, high jumps and more.

We encourage you to come along, show your support and join in the excitement as our young athletes demonstrate their skills and sportsmanship.

#### Administration News - Mrs Dee Jefferd

##### Incursions/Excursions/Camps - Invoicing and Permissions

Invoices for incursions/excursions/camps will in future only be generated after permission forms are received for each student. Please ensure permission forms are returned by the due date so all invoices can be raised as soon as possible.

Commencing in term three, advice of incursions, excursions and camps will be provided through the QParents app. Permission will also be collected via the app, therefore simplifying the process for parents. If you do not yet have access to QParents, could I please urge you to do this as soon as possible. Should you have any difficulties signing up, or require the invitation to be resent to you, please contact Administration for assistance. We are very happy to help.

##### Absences

When reporting absences by email or absentee line, please ensure you provide a reason for the absence, e.g. illness, holiday, family reasons, etc as this is a OneSchool requirement.

#### Music News - Mrs Julie West

##### Busker Week Concerts

Instrumental students, Senior Choir, Junior Choir and Ukulele students are working hard in rehearsal as they look forward with excitement to their concerts during Busker Week - Week 9 of Term 2.

The concert dates are:

- Tuesday, 11 June 6pm in the Hall: Instrumental Strings and Band ensembles
- Thursday, 13 June 6pm in the Hall: Senior Choir, Junior Choir and Ukulele Club.

Students from these programs will also be performing throughout Busker Week during break times at various venues throughout the school.

Mrs Price, Mr Humphry, Ms West and Mr Buchanan would like to thank Senior Strings, Senior Band, Senior Choir, Junior Choir and Ukulele Club students for their continued consistent attendance at rehearsals at break times and before school. Performing in these ensembles is a key part of learning throughout our music program and continued attendance contributes to successful performances.

##### Instrumental Fanfare 2024

The Senior Strings Orchestra and Senior Concert Band will be performing at Centenary State High School (CSHS) on Wednesday, 5 June in the regional heats of Instrumental Fanfare.

This is a biennial Department of Education music competition designed to showcase the instrumental music program in Queensland state schools. There are close to 1,000 ensembles presenting their work across Queensland in May/June. CSHS has allowed parents and guests to attend.

Strings and Band students' parents and guardians will be dropping off their children dressed in their Performing Arts uniform by 8:30am at the CSHS Performing Arts Centre, as our Senior Strings Orchestra and Senior Concert Band are playing in the first session of the program. The students will return by bus, leaving CSHS at 11:15am and arriving back at school by 11:30am. We wish them well!

##### Westcent News

Congratulations to the following students who were accepted into the Westcent Workshop for Strings - John S., Aadithiya K. and Charlotte F.



We have also just been advised today that Harry T. has been accepted into the Westcent Workshop for Band.

The students had to audition and it is highly competitive to get a place in these workshops, so well done!



**Middle Park State School**  
27 Macfarlane Street  
MIDDLE PARK QLD 4074

**Telephone: 07 3712 9888**  
**Email: [admin@middleparkss.eq.edu.au](mailto:admin@middleparkss.eq.edu.au)**  
**Office hours: 8.00am - 3.45pm**

## Student Support Team News



### Managing Big Emotions: Triple P's Parenting Tips

Children experience a range of emotions as they grow and learn. Sometimes, tantrums or aggressive behaviour such as hitting, kicking or biting are a way to express strong feelings like frustration or anger. It's helpful to know tantrums are a normal and expected part of a young child's development. As the emotional centre of their brain develops, they may react intensely when things don't go as they want or expect.

Dealing with aggressive behaviour is a common challenge for parents and carers too, as children learn to communicate their needs, express themselves, and get along with others. It can help to teach kids about feelings, notice and encourage their positive behaviour, and set a calm and consistent example.

Although it's normal to raise your voice occasionally, getting angry or yelling can escalate a situation. It can also teach kids that yelling is appropriate, or create a cycle where getting children to cooperate becomes increasingly tricky. Calmness is a parenting superpower. It can diffuse difficult situations and help children learn important life skills like self-regulation. Keeping a check on your emotional response and managing your stress can make a positive difference.

To learn more, read Triple P's helpful articles on tantrums, children's aggression and yelling.

The Triple P – Positive Parenting Program® can help you handle the ups and downs of parenting more calmly and confidently.

\*\*\*REMEMBER\*\*\*

As parents and caregivers, we need to be kind to ourselves to be able to meet the needs of our children. If you need support with any parenting matters you can contact PARENTLINE for FREE and confidential counselling over the phone or online.

PARENTLINE is available 7 days a week from 8am to 10pm  
1300 30 1300 or <https://parentline.com.au/>

## eLearning Coordinator – Mrs Emma Turner

### 2024 Parliament in Minecraft Education Competition

Our annual Minecraft competition is up and running as an extra-curricular lunch time activity. We are aligning with the Queensland Parliamentary Education Team's competition, which asks students to build the green legislative assembly chamber in Minecraft.

Students have been attending at a lunch break on Tuesdays but busily working on their projects in their own time. I have seen some wonderful builds already – one build has not only developed the green chamber but many of the other rooms within Parliament House including a restaurant, art gallery and green space! Whilst I enjoy seeing students extend themselves, it's important to remember that for the competition they will only be judged on what they create inside the green chamber.

The due date has just been extended to Week 8 of this term so there is plenty of time left. Here is the competition handbook for parents interested in seeing the rules and judging criteria: <https://documents.parliament.qld.gov.au/Explore/Education/teacherzone/MinecraftCompHandbook2024.pdf>.

I will leave you with a bird's eye view screenshot of one of our student entries currently under construction:



## 2H – ANZAC Day Art

In 2H last term, we watched a science program all about plastic, as we were learning about materials and their properties. During the show we learnt about a deceased artist, Mary Ellen Croteau, who collected over 7,000 plastic bottle tops to create murals and self-portraits. Her work is quite amazing. The children asked questions like: How many bottle tops did the art pieces take? How long did it take her to collect them? How long did it take her to make the art?



**Middle Park State School**  
27 Macfarlane Street  
MIDDLE PARK QLD 4074

**Telephone: 07 3712 9888**  
**Email: admin@middleparkss.eq.edu.au**  
**Office hours: 8.00am - 3.45pm**

We researched these questions and they were fascinated with the answers. Some suggested that we could collect bottle tops and make our own piece of artwork, so we collected plastic bottle caps over seven weeks. After learning about ANZAC in the first week of term, the children decided to create a piece inspired by our learned understandings of ANZAC. The children all came up with their own designs. We collectively identified the key features and included them in the art. The children wanted to represent many elements of the ANZACs:

- poppies to represent the people who served and died in the wars
- water representing the seas they travelled across and the beach where they landed in Gallipoli
- the hill representing where they fought for so long, while also representing a place of rest for those who died
- the cross also signifies those who died and is something they recognise from images, books, videos and medals the ANZACs and servicemen/women/animals receive.



Each child placed bottle tops in the different elements when we were planning the design, then each child glued on a section of the art. They were extremely proud of themselves, as they should be. Well done 2H!

### QParents News

Did you know that you can already use the QParents app to:

- Easily update parent and student details such as address, contact and medical information from wherever you are at any time
- make payments and view all your invoices in one place
- advise if your child will be absent from school
- view and download report cards
- see upcoming events
- access your child's enrolment history.

From term three, QParents will also be used to obtain consent for upcoming school events (excluding P&C events). Paper notes will no longer be sent home, as all consent requests will be sent through QParents.

If you aren't already using the QParents app, please ensure you sign up before the end of the term. If you require the invitation to be re-sent or further assistance, please email Administration.

### Date Claimers

Term 2		
Week 6	Chappy Week	
	Monday, 20 May	Chappy Meal Deal
	Tuesday, 21 May	P&C Meeting (F2F)
Week 7	Wednesday, 22 May	Met West Region Cross Country National Simultaneous Story Time
	Tuesday, 28 May	School Council (F2F)
Week 8	Thursday, 30 May	Year 2 Street Science Incursion
	Monday, 3 June	200m and 800m races
	Tuesday, 4 June	Years 3-6 Track and Field
Week 9	Wednesday, 5 June	Fanfare
	Thursday, 6 June	Technology Day @ CSHS
	Busker Week	
Week 10	Tuesday, 11 June	Instrumental Music Night
	Wednesday, 12 June	P-2 Sports Carnival
	Thursday, 13 June	Choir & Ukulele Night
Week 10	Mon - Fri (17 June - 21 June) - Year 6 Cairns Trip	
	Tuesday, 19 June	Prep Wildcall Wildlife Incursion
	Wednesday, 20 June	P&C Meeting (Online)
	Friday, 21 June	P-2 Under 8's Day
Final day of Term 2		
Term 3		
Week 1	NAIDOC Week	
	Monday, 8 July	Term 3 commences
Week 2	Tuesday, 16 July	P&C Meeting (Online)
	Wednesday, 17 July	Prep 2025 Information sessions (9:30am & 6:30pm)
	Thursday, 18 July	District Track and Field
Week 3	Saturday, 20 July	P&C Trivia Night
	Monday 22 - Friday, 26 July	Westcent Music Workshop
	Wednesday, 24 July	Year 5 Writers' Day - CSHS
Week 4	Thursday, 25 July	Year 1 Fire Safety Visit 1
	Monday, 29 July	P-2 Bravehearts Incursion
Week 5	Thursday, 1 August	Year 1 Fire Safety Visit 2
	Wednesday, 7 August	2025 Prep Connect Meetings
Week 5	Thursday, 8 August	Year 5 Science Day - CSHS



Kind regards

*Penny Couch*

Penny Couch  
Principal



**Middle Park State School**  
27 Macfarlane Street  
MIDDLE PARK QLD 4074

**Telephone:** 07 3712 9888  
**Email:** [admin@middleparkss.eq.edu.au](mailto:admin@middleparkss.eq.edu.au)  
**Office hours:** 8.00am - 3.45pm



## MIDDLE PARK STATE SCHOOL ENROL NOW FOR PREP 2025

**SUBMIT YOUR ENROLMENT ASAP - FORMS CAN BE FOUND ON THE SCHOOL WEBSITE OR COLLECTED FROM THE SCHOOL OFFICE**



### PARENT INFORMATION SESSIONS

Wednesday July 17  
2 sessions - you choose  
9.30am **or** 6.30pm  
in the school Library  
No RSVP required

### ENROLMENTS DUE NOW

☎ 3712 9888  
🌐 <https://middleparkss.eq.edu.au>



## CENTENARY CHRISTIAN KINDERGARTEN 2025 Enrolments Now Open!

CALL OUR OFFICE ON 3373 4490  
OR VISIT OUR WEBSITE [WWW.CENTENARYCHRISTIANKINDERGARTEN.ORG](http://WWW.CENTENARYCHRISTIANKINDERGARTEN.ORG)  
FOR MORE INFORMATION.



*"CCK IS A VERY SPECIAL PLACE! I FEEL BLESSED TO HAVE MY CHILD EXPERIENCE SUCH A HAPPY YEAR WITH QUALITY EDUCATORS, PROGRAMMING AND EXPERIENCES! THANK YOU!" (PARENT FEEDBACK 2023)*

