



**Middle Park State School**  
27 Macfarlane Street  
MIDDLE PARK QLD 4074

**Telephone:** 07 3712 9888  
**Email:** [admin@middleparkss.eq.edu.au](mailto:admin@middleparkss.eq.edu.au)  
**Office hours:** 8.00am - 3.45pm

## MID-TERM 1 NEWSLETTER – 23/02/2024

Dear MPSS Families,

We've had a great start to the year, with all students transitioning well into their new classes. Teachers spent the first few weeks establishing expectations for various classroom and playground routines for learning and behaviour. Our Parent/Teacher interviews conducted last week allowed families an early opportunity to build connections with class teachers and share information about how their child/ren have transitioned into the new year and the class, and for parents/carers to share with teachers any specific individual needs of their child/ren.

Our Day 8 enrolment numbers were 618, which, when entered into the Department's Staffing Allocative Model, provided us with the 25 classroom teachers we had planned for, meaning there was no requirement to change classroom structures.

We welcome the following new staff members to Middle Park SS:

- **Jorja Braithwaite** – Prep B – replacing Lauren Forno (secondment)
- **Caitlin Pfrunder** – Year 5 – replacing Brendan Green (SPLV)
- **Julian Sanchez** – HPE/Internal Relief
- **Sonia Adolphs** – Social Worker

### Strategic Planning

Equity and Excellence has been used as a lens to support our school planning for 2024. We have taken time to reflect upon student educational achievement, wellbeing and engagement, and culture and inclusion as we set our school priorities for this year. Getting to know each student's needs to support their transitions from one year level to the next, their achievement in English and Mathematics and maximising their learning are key priorities within our work.

We are continuing to implement our school vision, while positioning the school to be able to take advantage of the opportunities that are coming from the system. As a school we reflect upon progress on our four-year strategic plan and develop an annual implementation plan. The focus for the school in 2024 has been informed by our data from 2023, including feedback from the school community obtained through the School Opinion Survey.

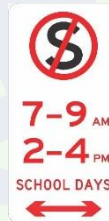
The 2024 Annual Improvement Plan has now been finalised with a focus on our three pillars, Informed Teaching, Supportive Environment and Collaborative Culture. I look forward to planning for, and working collaboratively with all stakeholders to enact the specific strategies related to Australian Curriculum V9 familiarisation and implementation, the Effective Teaching of Reading, Student Engagement and reviewing our Whole School approach to Pedagogy.

### Switch4Schools – Student Wellbeing

This year we are excited to bring Switch4Schools (also commonly known as Switch) into our school community, beginning with Years 3 to 6 students. Switch is a program designed to help children understand and manage their emotions, which research shows is more crucial for academic success than IQ or personality traits. With mental health challenges hindering both school performance and overall wellbeing for many students, fostering emotional intelligence is crucial for navigating obstacles and achieving success in school and beyond. Teachers and students will engage in lessons and activities related to emotional intelligence, including understanding and managing emotions, empathy and constructive conflict resolution strategies.

Students will also be encouraged to "check in", usually at the start of the day, to learn to identify and label their feelings, and will be supported to learn about and participate in small activities that are designed to help the students learn to more effectively manage their emotions in the classroom. These small strategies are expected to create a classroom environment more conducive to learning for all. To learn more parents can visit the website, <https://www.switch4schools.com.au>.

### Road Safety and Parking around the School



A friendly reminder once again about road safety around schools. Schools are busy areas, where there are often lots of children—who do not always understand the danger of roads and vehicles. Make sure to take extra care when parking on the roads and streets around the school and follow the signed parking rules at all times.



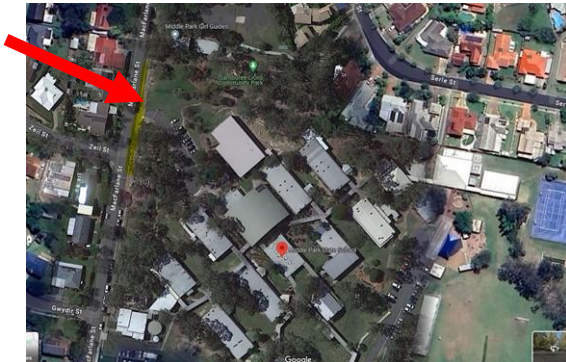
**Middle Park State School**  
27 Macfarlane Street  
MIDDLE PARK QLD 4074

**Telephone: 07 3712 9888**  
**Email: admin@middleparkss.eq.edu.au**  
**Office hours: 8.00am - 3.45pm**

You should always check parking signs carefully near schools as they are often stricter than normal parking rules. The type of parking restriction, and the times that it applies, will be on the sign.

Drop-off and pick-up areas, where you can quickly set down and pick up your children, create a safe environment for children and keep traffic moving. Drop-off and pick-up areas are signed with passenger loading zone signs or two-minute parking signs. These signs mean you have a maximum of two-minutes to drop off or collect your children.

The area along MacFarlane St marked in yellow is not to be parked in between the hours stipulated on the above sign



### School Communication

At MPSS we are committed to providing a safe, inclusive and supportive environment which promotes open communication, respect, fairness and positive relationships between all stakeholders. Effective communication between schools, parents/carers, students and the community is the foundation for developing and maintaining partnerships.

For urgent matters, student absences, enrolments, changes to contact details, and to arrange time to meet with teachers or the School Leadership Team please contact the office by telephone on 3712 9888.

Please refrain from contacting teaching staff on their personal mobile phones. We also ask that you avoid using email to contact teachers during the school day to pass on messages about going home arrangements as staff may not always be able to access emails.

### Harmony Day

Celebrating cultural diversity is at the heart of Harmony Week. Harmony Week has been celebrated in Australia since 1999. It is celebrated during the week (Monday to Sunday) that includes 21 March, which is the United Nations International Day for the Elimination of Racial Discrimination. It is about inclusiveness, respect and a sense of belonging for everyone.



On Thursday, 21 March, we are celebrating Harmony Day At MPSS. The theme is: "Everyone belongs". We encourage students to wear cultural dress or orange on Thursday, 21 March to help celebrate. Students will also discuss and participate in Harmony Week activities on the day and throughout the week. These activities may include: sharing and discussing books about cultural diversity, art and craft activities, cultural music, cultural food and other activities.

### Sports News – Mrs O'Brien and Mr Julian Sanchez

#### District Swimming

On Monday, 5 February, the students listed below represented MPSS at the Northern Eagles District swimming trial. All swimmers put in an amazing effort with most MPSS swimmers receiving Personal Best times. Districts is a highly competitive environment with well over 50 competitors in most events. I hope all swimmers are extremely proud of their efforts.

Name	Event	Place	Time
Max H 6AG	#65 Boys 11yrs 50m Backstroke	28	56.57
Laura R 4K	#12 Girls 10yrs 50m Breaststroke	8	56.82
	#64 Girls 10yrs 50m Backstroke	14	52.81
Rachel R 6AG	#10 Girls 11yrs 50m Breaststroke	20	57.23
	#28 Girls 11yrs 50m Freestyle	25	40.61
	#66 Girls 11yrs 50m Backstroke	16	50.57



**Middle Park State School**  
27 Macfarlane Street  
MIDDLE PARK QLD 4074

**Telephone: 07 3712 9888**  
**Email: admin@middleparkss.eq.edu.au**  
**Office hours: 8.00am - 3.45pm**

Sofa G 5/6C	#8 Girls 12yrs 50m Breaststroke	8	45.44
	#26 Girls 12yrs 50m Freestyle	18	35.83
	#40 Girls 12yrs 200m IM	3	3:11.88
	#44 Girls 12yrs 100m Backstroke	2	1:32.40
	#54 Girls 12yrs 50m Butterfly	14	42.08
	#68 Girls 12yrs 50m Backstroke	5	41.74
Ildiko G 4C	#12 Girls 10yrs 50m Breaststroke	12	58.76
	#30 Girls 10yrs 50m Freestyle	30	46.40
	#64 Girls 10yrs 50m Backstroke	19	55.78
Reuben W 6AG	#9 Boys 11yrs 50m Breaststroke	11	54.98
	#27 Boys 11yrs 50m Freestyle	13	37.87
	#51 Boys 11yrs 50m Butterfly	2	41.57
	#65 Boys 11yrs 50m Backstroke	10	47.25
Imogen G 4C	#30 Girls 10yrs 50m Freestyle	19	43.33
	#44 Girls 10yrs 100m Backstroke	2	1:44.60
	#50 Girls 10yrs 50m Butterfly	7	56.83
	#64 Girls 10yrs 50m Backstroke	2	47.44

Imogen, Reuben and Sofia have now been invited to join the Northern Eagles District Swimming Team to compete at the Met West Regional Swimming trial at the Brisbane Aquatic Centre, Chandler on Wednesday, 21 February. Good luck!!!

### **MPSS Years 3 to 6 Cross Country**

When: 9am to 11am, Tuesday, 12 March (week 8)

Where: Top oval

In preparation for our school cross country, over 70 students have been joining me at cross country training for some exercise before school. Is there any better way to start the day?!? Training takes place Tuesdays and Thursdays, 7:45 to 8:15am for interested students in Years 3 to 6. Collect a permission note from your teacher or the office.

### **Swimming Showcase – Years 1 and 2**

Join us as we celebrate the incredible progress and achievements of our young swimmers from Years 1 and 2. From mastering basic strokes to gaining confidence in the water, our students have shown tremendous growth, and we can't wait to showcase their talents. The Swimming Showcase promises to be a celebration of skills, determination, and the joy of learning in the water.

#### **What to Expect:**

**Student Performances:** Watch in awe as your little swimmers demonstrate their newfound aquatic abilities. It's a moment of pride for both parents and students alike.

**Interactive Sessions:** Dive deeper into the world of our swimming program with interactive sessions. Learn about the techniques we use to make swimming an enjoyable and valuable experience for our young learners.

We will be holding our showcase on Tuesday, 12 March (Year 1) and Wednesday, 13 March (Year 2). Your child's time in the spotlight will correspond to their HPE timetable. Make sure to mark your calendars for this special occasion. It's a fantastic opportunity to cheer on your child and their peers as they make a splash in the pool. If you have any questions or need more information, feel free to reach out to us.

### **Music News – Mrs Julie West**

Music Making Everywhere!

MPSS students have had a marvellous musical start to the year. It is inspirational to see the positive support for our extra-curricular music groups, Senior Choir (Years 4 to 6), Junior Choir (Years 2 to 3) and Ukulele Club (Years 3 to 6).

It is wonderful to have so many enthusiastic and happy students singing and playing this year. All groups are currently learning new repertoire for our upcoming performances and we are starting to make beautiful music. A big thank you to Choir Captains Lily A., Soha S. and Steven C. for all their assistance with rehearsals.



*2024 Choir Captains Soha, Steven and Lily assisting at Junior Choir rehearsal.*



**Middle Park State School**  
27 Macfarlane Street  
MIDDLE PARK QLD 4074

**Telephone: 07 3712 9888**  
**Email: admin@middleparkss.eq.edu.au**  
**Office hours: 8.00am - 3.45pm**

The first event on our calendar is Senior Choir and Ukulele Club performing during Harmony Week on Monday, 18 March on Senior Assembly at 2pm.

This should be a very special event to share with our senior school community!

Remember if any student is keen to join any of these groups, they are always welcome to do so!

\*Just a note for our Ukulele Club students. If you would like to bring your own Ukulele to school you may do so on rehearsal days. Ukuleles are to be brought to the music room before school for safe storage and then picked up at the end of the day.

The instrumental program is in full swing and it has been lovely to see and hear the great work students have been putting into the Band and Strings program.

Congratulations to the Year 6 leaders at the recent induction assembly. I took great pleasure in handing out the badges to the Band, Strings and Choir Captains at this very special event. Congratulations Charlotte F., Jon S., Sophie L., Reuben W., Lily A., Soha S. and Steven C.!

#### HASS News – Mrs Jasmine Ellis

During HASS lessons, our Prep to Year 3 Students have been exploring the Learning Assets and how they help us to become strong, independent, curious, imaginative and powerful learners.

Prep students have been developing the Learning Asset of **Communicator**. We have been discussing how to share our ideas and how we can listen respectfully and actively to others. Prep students have been enjoying sharing what makes us special and the members of our families.



Year 1 students have focused on being **Thinkers** and how we can use the school rules to Be Safe, Be Caring and Be a Learner in HASS. We have been investigating our big question “What are the features of my local place and how have they changed?” We have been researching the features of Southbank Parklands.

Our Year 2 learners have been investigating how to be **Collaborators**. We have been exploring our big idea “How are people connected to their place and other places?” The students have been working together to explore maps of Australia and the world.



In Year 3, we have been exploring the six Learning Assets to create posters for the classroom. The students have been investigating “How and why are places similar and different?” We have been discussing how to be a **Researcher**. We have been using our research skills to research a natural or man-made feature of Australia and sharing our knowledge with the class.



I am looking forward to continue using the Learner Assets as a driver of our learning in HASS.

#### NAPLAN News Years 3 and 5 Students – 13 to 25 March 2024

All parents/caregivers in Year 3 and Year 5 will have received an email with important information about our upcoming NAPLAN sessions. NAPLAN is a national literacy and numeracy assessment that students in Years 3, 5, 7 and 9 sit each year.



**Middle Park State School**  
27 Macfarlane Street  
MIDDLE PARK QLD 4074

**Telephone: 07 3712 9888**  
**Email: admin@middleparkss.eq.edu.au**  
**Office hours: 8.00am - 3.45pm**

NAPLAN assesses literacy and numeracy skills that students are learning through their regular school curriculum. Students sit assessments in writing, reading, conventions of language (spelling, grammar and punctuation) and numeracy. The questions assess content linked to the Australian Curriculum: English and Mathematics. It is just one aspect of our school's assessment and reporting processes. It doesn't replace ongoing assessments made by teachers about student performance, but it can provide teachers with additional information about students' educational progress.

Online NAPLAN tests provide more precise results and are more engaging for students. One of the main benefits is tailored (or adaptive) testing, where the test presents questions which may be more or less difficult depending on a student's responses. Tailored testing allows a wider range of student abilities to be assessed and measures student achievement more precisely. A student's overall NAPLAN result is based on both the number and complexity of questions they answer correctly. Your child should not be concerned if they find questions challenging; they may be taking a more complex test pathway.

Students are not expected to study for NAPLAN. You can support your child by reassuring them that NAPLAN is a part of their school program and reminding them to simply do their best. Some familiarisation and explanation of NAPLAN is useful to help students understand and be comfortable with the format of the tests. Teachers will ensure students are familiar with the types of questions in the tests and will provide appropriate support and guidance.

If you have any further questions about NAPLAN, please don't hesitate to contact your class teacher or alternatively our HOD-Curriculum, Jo Mackintosh, on [jmack47@eq.edu.au](mailto:jmack47@eq.edu.au).

### Student Support Team News

#### Sonia Adolphs – Social Worker

My name is Sonia Adolphs and, as a part of the Department of Education Student and Wellbeing Package initiative, I have joined Middle Park SS's wellbeing team.



I am a wellbeing professional here to work collaboratively with staff to provide professional support and information to students, parents, caregivers and school communities that facilitate strong connections for the enhancement of all student wellbeing and learning.

My role as a social worker focuses on the student in the school environment, to work towards learning outcomes through relief of distress, the removal of barriers or inequities, support for referral to external services and the development of safe and inclusive schools and communities.

I will work with staff and families to provide individual, small group and whole school mental health support to children with mild to moderate mental health concerns and address any issues both within and external to the school environment that may be affecting their connectedness and engagement in schooling.

I look forward to sharing my knowledge and experience with our school community.

#### Leisa Hayes – Guidance Officer

Welcome to the 2024 school year. My name is Leisa and I am your Guidance Officer (GO). I began at Middle Park SS in January 2023. Over the past year I have really enjoyed working with the school community. It is my job to advocate for students in this community that require support. I work with the moderate to high needs students. I counsel students who are identified through the Student Support Team, of which I am a member. I am a strong believer in play and often use 'child-centred play' to work with students. I am the chair of the Student Wellbeing Team that includes our Chappy, Social Worker and Teacher Aide Wellbeing. We all work closely together. I have been a GO for over 10 years and love the work I do with students, parents and school staff.



#### Head of Inclusion – Kate Beehag



A very warm welcome back for the commencement of the 2024 school year. I hope everyone has had a safe and relaxing holiday break.

The IMPACT Team works collaboratively to provide inclusive education so that students can access and fully participate in learning, alongside their similar-aged peers, supported by reasonable adjustments and teaching strategies tailored to meet their individual needs.

I would like to take this opportunity to introduce The IMPACT Team for 2024:

#### Inclusion Support Teachers:

Chloe Woodward - Prep, Year 1, 2P

Hayley Kellner - Year 2-3, 3/4

Beau Bignell - Year 4-5

Ronnie Fiedler - Year 6, 5/6

#### Inclusion Support Teacher Aides:

Sharyn Ballard

Debbie Foster

Tracey Meakin

Gloria Kelb

We look forward to a positive start and a great 2024!!



**Middle Park State School**  
27 Macfarlane Street  
MIDDLE PARK QLD 4074

**Telephone:** 07 3712 9888  
**Email:** admin@middleparkss.eq.edu.au  
**Office hours:** 8.00am - 3.45pm

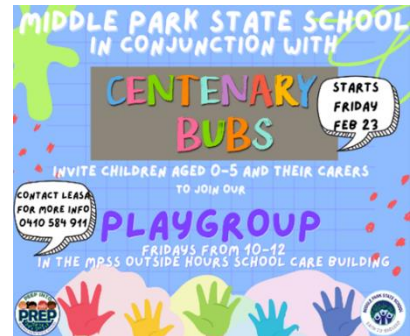
**Date Claimers**

Term 1		
Week 6	Monday, 26 February	P-2 Assembly @ 2pm (Hall)
	Wednesday, 28 February	Free Dress Day to support tuckshop
Week 7	Monday, 4 March	3-6 Assembly @ 2pm (Hall) Chappy Event - Dads & Kids Escape Room @ 5.30pm
Week 8	Monday, 11 March	P-2 Assembly @ 2pm (Hall)
	Tuesday, 12 March	Years 3 to 6 Cross Country School Council Meeting @ 6:30pm in Administration Building Year 1 Swimming Showcase
	Wednesday, 13 March	NAPLAN commences Year 2 Swimming Showcase
Week 9	Monday, 18 March	3-6 Assembly @ 2pm (Hall)
	Tuesday, 19 March	P&C Meeting incl AGM
	Thursday, 21 March	Harmony Day
Week 10	Monday, 25 March	Chappy Meal Day
	Thursday, 28 March	P-2 Easter Bonnet Parade @ 9am (Lower Covered Area) FINAL DAY - TERM 1
	Friday, 29 March	GOOD FRIDAY
Term 2		
Week 1	Monday, 15 April	School resumes
	Tuesday, 16 April	P&C Meeting
Week 2	Monday, 22 April	ANZAC Day ceremony @ 9am (Lower Covered Area)
	Thursday, 25 April	ANZAC DAY HOLIDAY
Week 3	Monday, 29 April	Assembly Chappy Event - Mums & Kids Paint & Sip
Week 4	Monday, 6 May	LABOUR DAY HOLIDAY
	Thursday, 9 May	School Photos
	Friday, 10 May	School Photos



Kind Regards,  
*Pd Couch*  
Penny Couch  
Principal

**Playgroup at MPSS Returns**



**Would you like to know more about how your child is being taught to read?**

The Department of Education and [P&Cs Qld](#) are holding Twilight reading sessions for parents and carers to provide information on Queensland's Reading Commitment and how to support your child's reading at home.

- 13 March 2024
- 6:30pm - 7:15pm
- Parents & carers of Prep to Year 2 students



Secure your spot now: <https://www.ivvy.com.au/event/KLCA5Y/>  
Don't miss out on this fantastic opportunity to support your child's love for reading!